

Unit 1.1 - Characteristics of Functions Notes

1. Supply the requested information based on the graph.

Domain: _____

Range: _____

Increasing: _____

Decreasing: _____

Maximum: _____

Minimum: _____

Points of Discontinuity: _____

Symmetry: _____

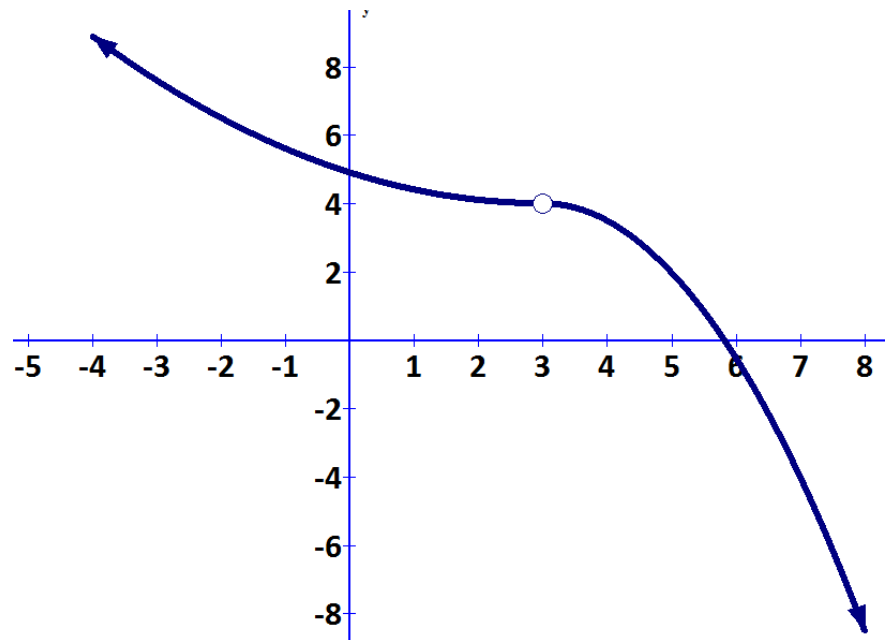
Concavity: _____

x-intercepts: _____

y-intercept: _____

End Behavior: as x approaches ∞ , y approaches _____

as x approaches $-\infty$, y approaches _____



2. Supply the requested information based on the graph.

Domain: _____

Range: _____

Increasing: _____

Decreasing: _____

Maximum: _____

Minimum: _____

Points of Discontinuity: _____

Symmetry: _____

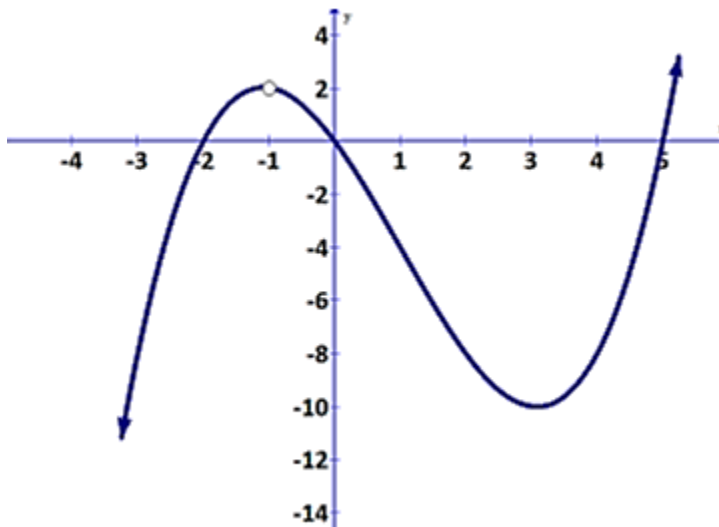
Concavity: _____

x-intercepts: _____

y-intercept: _____

End Behavior: as x approaches ∞ , y approaches _____

as x approaches $-\infty$, y approaches _____



3. Supply the requested information based on the graph.

Domain: _____

Range: _____

Increasing: _____

Decreasing: _____

Maximum: _____

Minimum: _____

Points of Discontinuity: _____

Symmetry: _____

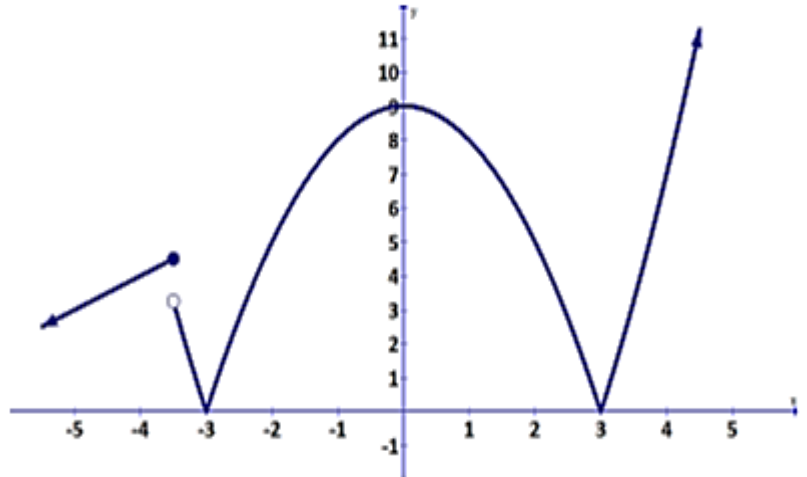
Concavity: _____

x-intercepts: _____

y-intercept: _____

End Behavior: as x approaches ∞ , y approaches _____

as x approaches $-\infty$, y approaches _____



1. Supply the requested information based on the graph.

Domain: _____

Range: _____

Increasing intervals: _____

Decreasing intervals: _____

Maximum: _____

Minimum: _____

Points of discontinuity: _____

Symmetry: _____

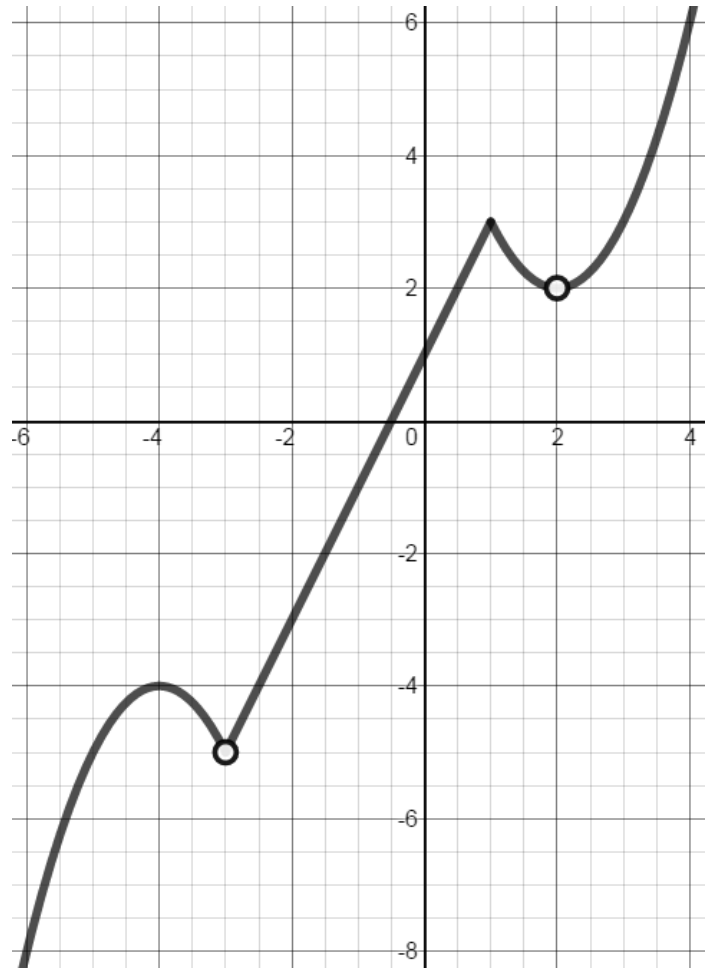
Concavity: _____

x -intercepts: _____

y -intercept: _____

End Behavior: as x approaches ∞ , y approaches _____

as x approaches $-\infty$, y approaches _____



2. Supply the requested information based on the graph.

Domain: _____

Range: _____

Increasing intervals: _____

Decreasing intervals: _____

Maximum: _____

Minimum: _____

Points of discontinuity: _____

Symmetry: _____

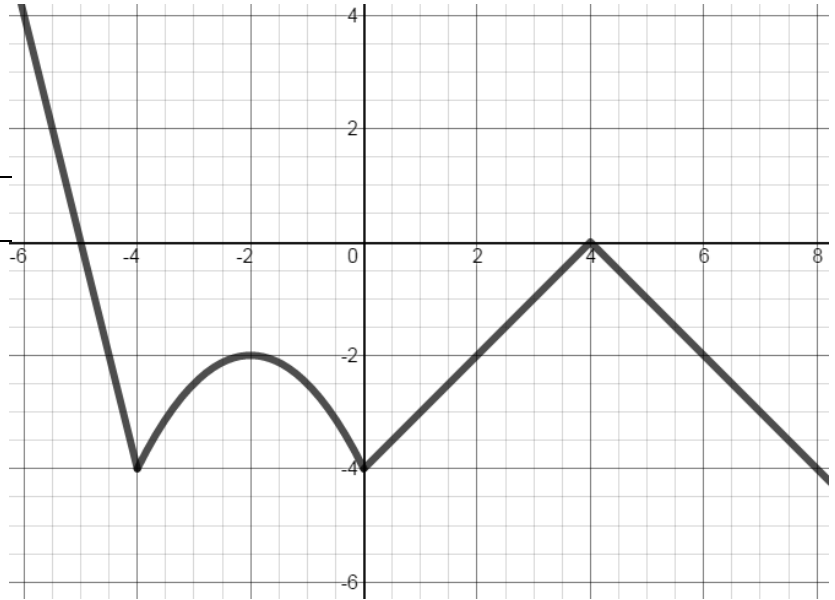
Concavity: _____

x -intercepts: _____

y -intercept: _____

End Behavior: as x approaches ∞ , y approaches _____

as x approaches $-\infty$, y approaches _____



3.

Domain: _____

Range: _____

Increasing intervals: _____

Decreasing intervals: _____

Maximum: _____

Minimum: _____

Points of discontinuity: _____

Symmetry: _____

Concavity: _____

x -intercepts: _____

y -intercept: _____

End Behavior: as x approaches ∞ , y approaches _____

as x approaches $-\infty$, y approaches _____

